

GEOFF WILSON

PAINTINGS IN AIARTS *DESSERTS* EXHIBITION

MARCH 2023

PAINTING FRESH OFF THE EASEL



Pine trees at Belair 2023 102x46cm oil on linen

PAINTINGS FROM JUNE JULY 2022 LANDSCAPE EXHIBITION
See June 2022 exhibition catalogue for paintings in the exhibition

THE FOLLOWING TWO PAINTINGS ARE STILL FOR SALE



Farm with a white fence 2020 92x41cm oil on linen

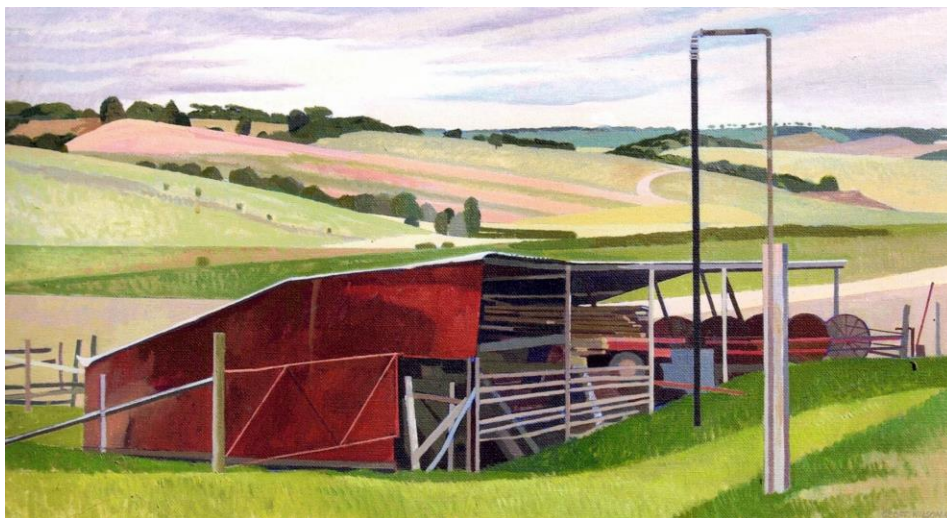


The big wedge of scrub – McLaren Vale south 2019 to 2022 112x51cm oil on linen

PAINTINGS FROM PREVIOUS YEARS



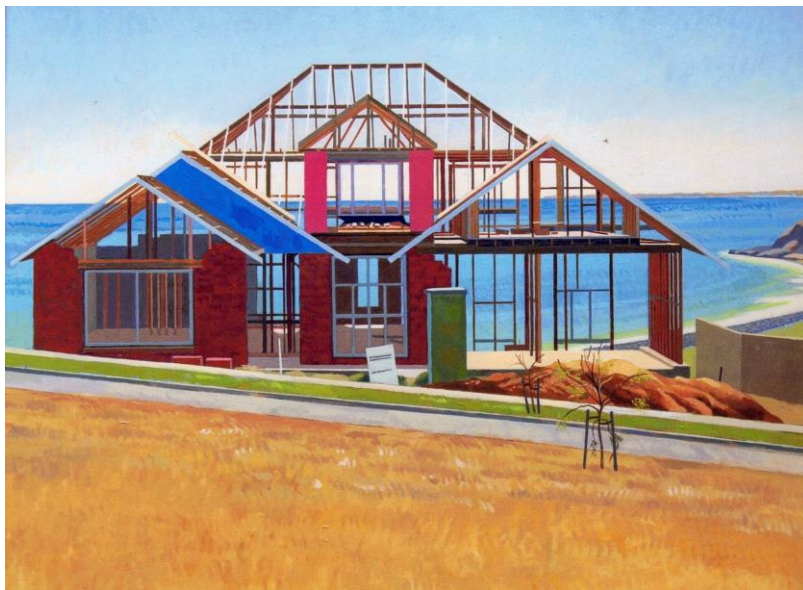
The Cypress and the Stobie Piccadilly Village 1984 90x50cm acrylic on canvas



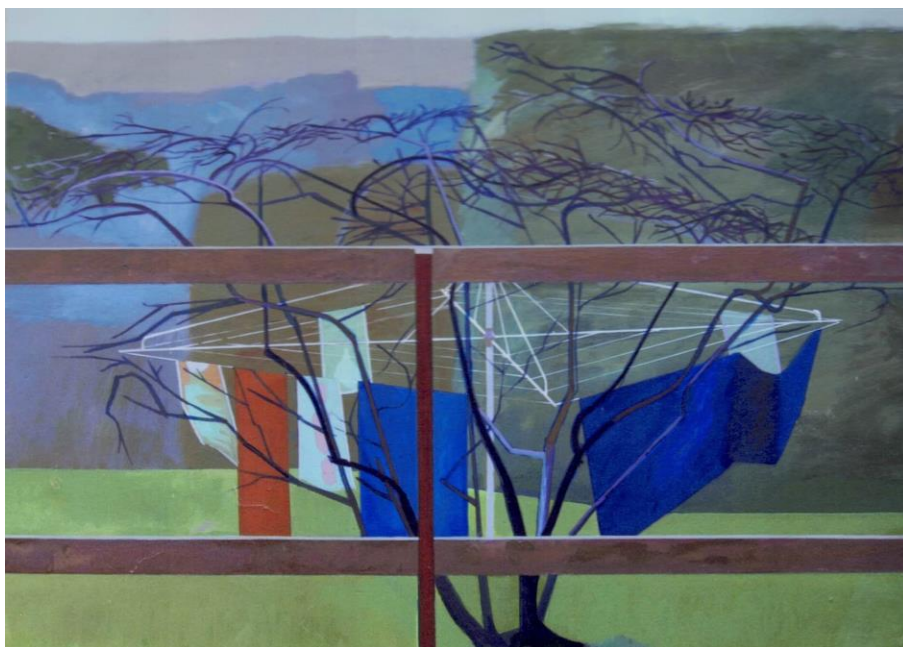
Black water hose - East Aldinga 1991 91x 50cm oil on linen



Landscape west of Pengilly Farm 1989 91x51cm oil on linen



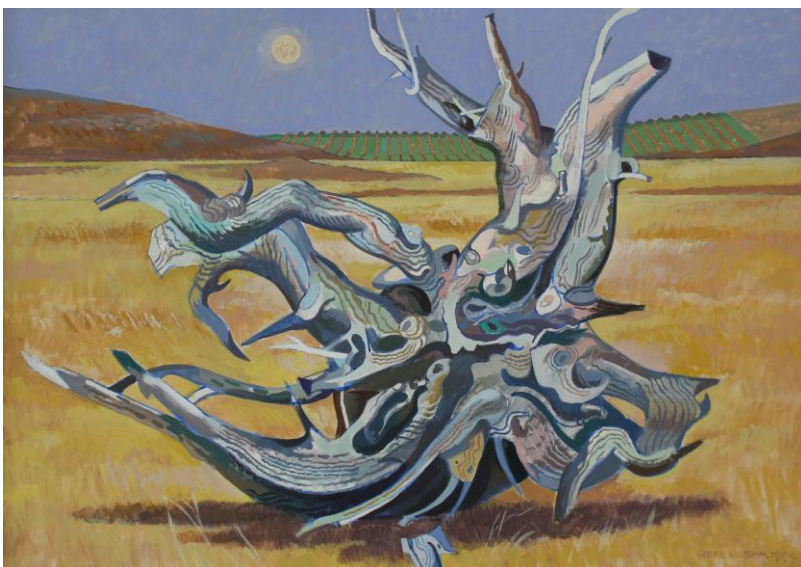
You get an ensuite with a sea view 1998 77x61cm oil on canvas on board



Fog at Belair: washing and quince tree 1981 91x 61cm acrylic on canvas



River Murray from Banrock Station's graveyard 1999 74x52cm acrylic on board



Gum stump and vineyard (Banrock Station) 1999, 71x52 cm acrylic on board